

WHISPERS

Before the Dark

Lookbook

Written, Directed, and
Production designed by:
Emily Gussack



Logline

When Monica comes knocking on Mr. Willows door things dont go as planned. How far will Mr. Willows go to hide his secret? He may just discover his new obsession.

Mood and Tone



This film will have an unsettling feeling. That feeling you get deep in your gut when danger is near. It will have a moody and eerie tone. This film explores the concept of “Monster or Man?” The main character, Mr. Willows, will delve into his subconscious desires that conflict with what is deemed acceptable by humanity as a whole.



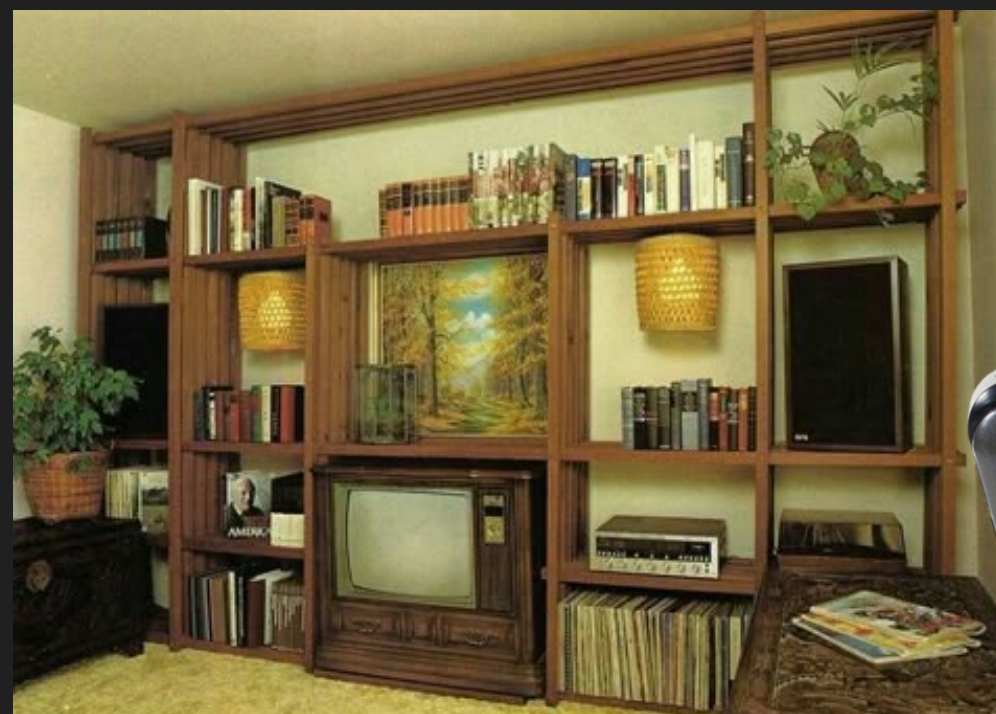
Lighting

Warm artificial light will be used throughout the film. The warm light creates a homely feel, as it is Mr. Willow's "safe place," his home, while still evoking unease. It causes everything to look dingy. The warm light also contrasts with the film's "cold" theme, creating a sense of dread.



Set Design

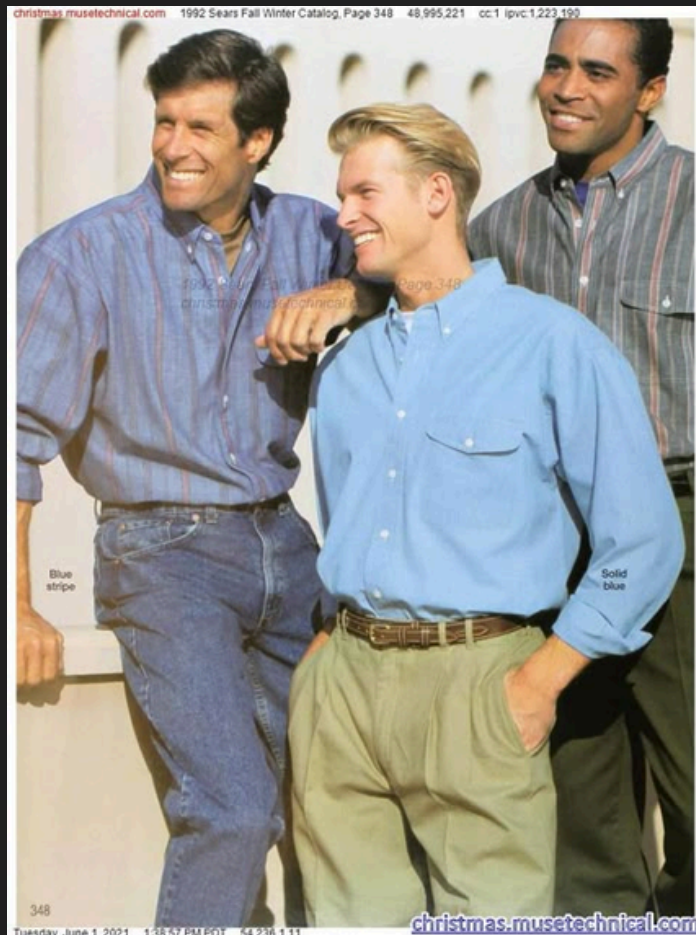
The film takes place sometime in the 90s, though Mr. Willows would have a mix of stuff from different decades. He isn't interested in the latest and greatest furniture, which shows. The warm colors contrast with the dark theme of the film, creating a sense of unease. The home is very lived in and has a population of odd items strewn around that, if noticed, draws to the conclusion of death.



Costuming

Mr. Willows

- 90's
- Inconspicuous
- Khakis or Jeans
- Some sort of button-down
- Loafers or Boots



christmas.musetechnical.com 1999 JCPenney Christmas Book Page 198 35.029.247 cc:10 ipcvc:12

A. New! St. John's Bay® utility shirt.*
Cotton/nylon twill. Washable. Imported. (0.50 lb.)
Colors: 35 medium blue; 53 wheat; 49 taupe; 63 sage; 79 lt. gray
Regular (5'8"-5'11 1/2"); S(14-14 1/2) neck, M(15-15 1/2), L(16-16 1/2), XL(17-17 1/2), XXL(18-18 1/2)
Tall (5'8"-6'3 1/2"); MT(15-15 1/2) neck, LT(16-16 1/2), XLT(17-17 1/2), XXL(18-18 1/2)

Size	Catalog No.	Each	2 or more, ea.
Regular	JP 515-2721 D	28.00	21.99
Tall	JP 515-2738 D	30.00	23.99

B. New! St. John's Bay fatigue pants.
100% cotton twill. Two front below pockets; two back pockets with flaps. Washable. Imported. (1.30 lbs.)
Colors: taupe, gray, khaki, olive

Size	Catalog No.	Each
Regular	JP 513-3389 Z	32.00
Big	JK 513-3387 Z	42.00

Waists for B

Waist	30	32	34	36	38	40	42	44	46	48	50	52	54
30													
32													
34													
36													
38													
40													
42													
44													
46													
48													
50													
52													
54													

C. St. John's Bay women's braided belt.
Fiji-grain leather. 1 1/2" wide. China. (0.50 lb.)
Colors: 54 brown; 82 black (not shown)
Regular: Waists 32-44 even

Size	Catalog No.	Each
Regular	JP 535-1212 D	20.00

*Save on any combination of items priced "2 or more" from the men's section.

198 call 1-800-222-6161
Monday, January 25, 2021 5:37:59 AM PST 125.227.255.92
christmas.musetechnical.com

E. Outblood® Light Out® shirt.
Instant Out™ Indigo Jeans

F. Carbon® Shirt
H. Light Indigo® Jeans

31.99 any 2 or more
E. Levi's® yarn-dyed cotton flannel shirt.*
5-oz. fabric in a relaxed silhouette. Flap pockets. Single-button cuffs. Imported. (1 lb.) Sizes below.
Colors: 03 outblood/light out, 37 navy/light out, 54 wainslight out, 62 black/light out.
JP 526-6222 D
Each \$38.00; any 2 or more, ea. 31.99

Colors for E:
Navy/Light Out
Wains/Light Out
Black/Light Out

31.99 any 2 or more
F. Levi's® Red Tab® denim shirt.* 100% cotton in a relaxed silhouette. Patch pockets. Imported. (1 lb.) Sizes below.
Colors: 36 carbon; 26 green; 78 new age bleach; 37 Instant Out™ indigo; 77 antique white; 05 outblood.
JP 526-3504 D
Each \$44.00; any 2 or more, ea. 31.99

Colors for F:
Green
New Age Bleach
Instant Out™ Indigo
Antique White
Outblood

36.99 any 2 or more
G. Levi's® 555™ Red Tab® jeans.* 100% cotton denim. Relaxed fit is slightly fuller through seat and thighs. Straight legs will fit over boots. USA or imported of U.S. components. (1.50 lbs.)
Regular/Tall (5'8"-6'3 1/2");
Waists 29, 36 with inseams 30, 32, 34, 36 with inseams 30, 32, 33, 34, 36 with inseams 30, 32, 34, 36. Waists 40, 42 with inseams 30, 32. Sandstone, navy and moss not available in waists 40 or 42.
JP 523-2392 E—Sandstone
JP 523-3044 E—Black
JP 523-3168 E—New Age Bleach
JP 523-3671 E—Instant Out™ Indigo
JP 523-2400 E—Navy
JP 523-2418 E—Moss
Each \$44.00; any 2 or more, ea. 36.99

Colors for G & H
see 198 for availability:
Sandstone
Black
New Age Bleach
Instant Out™ Indigo
Navy
Moss
Stonewash
Light Indigo

39.99 any 2 or more
H. Levi's® silverTab™ loose-fit pleated jeans.* 100% cotton denim. Loose fit is loose and full in seat and thighs. Five-pocket styling. USA or imported or U.S. components. (1.50 lbs.)
Regular/Tall (5'8"-6'3 1/2");
Waists 28, 29 with inseams 30, 32, 34, 36 with inseams 30, 32, 33, 34, 36, 38 with inseams 30, 32, 34. Waists 40, 42 with inseams 32, 34.
JP 523-2434 E—Black
JP 523-1352 E—Stonewash
JP 523-1493 E—Light Indigo
Each \$46.00; any 2 or more, ea. 39.99

Sizes for Shirts E & F:
Regular (5'8"-5'11 1/2"); state S(14-14 1/2) neck, M(15-15 1/2), L(16-16 1/2), XL(17-17 1/2), XXL(18-18 1/2).
*Save on any combination of 2 or more selected items from pages 309-317.
©Levi Strauss & Co., 1998

WishbookWeb.com

Costuming

Monica

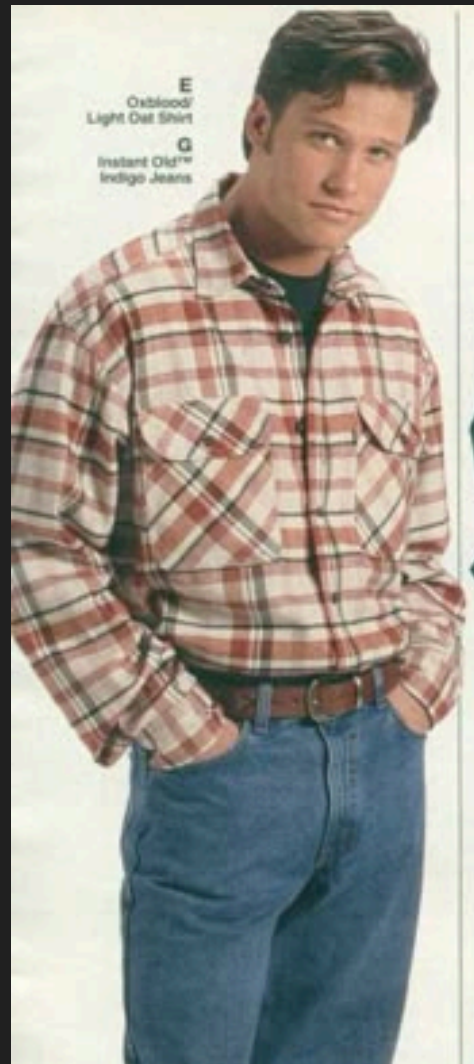
- 90s
- Pinks, Purples, Greens, Oranges, Yellows, and Blues
- A bit more concervative
- Camera
- Shoulder bag



Hair and Makeup

Mr. Willows

- Average male hair no major specifications



Before



- Blood on his hands, some on shirt, splattered a bit on his face



After

Hair and Makeup

Monica

- Half up, half down hair or out of face
- Light makeup



- Blood in hair, on face, on body



Before



After

Cinematography



The shots will be taken with a focus on the unsettling nature of the activities going on in Mr. Willow's house. There will be close-ups on different parts of the human body (mostly of Monica) foreshadowing her fate of ending up as one of Mr. Willow's experiments, snacks, and first human kill. For the shot of realisation of his kill, Mr. Willows will be shot in a high angle to show him coming into his own "power". Up until this point, Mr. Willows has not been shot at a high angle. As things unfold, the shots will become more abstract and surreal.